



3344 Churchview Avenue
Pittsburgh, PA 15227
412.882.9600
www.baldwinborough.org



OFFICIALS OF THE BOROUGH OF BALDWIN 2024

The Borough is governed by seven elected Council members and a Mayor. The Mayor is elected for a 4-year term; Council members are elected for 4-year overlapping terms. There are no term limits in Baldwin.

David Depretis

Mayor
ddepretis@baldwinborough.org

Erin Brown

President
ebrown@baldwinborough.org

Raymond "Butch" Dee

Vice President
Public Safety Liaison
rdee@baldwinborough.org

Patricia Boyer

Parks & Recreation Liaison
pboyer@baldwinborough.org

Marianne Conley

Personnel Liaison
mconley@baldwinborough.org

John Egger

Zoning & Planning Liaison
jegger@baldwinborough.org

Paul Hayhurst

Finance Liaison
phayhurst@baldwinborough.org

Elliot Rambo

Public Works Liaison
erambo@baldwinborough.org

MANAGER'S MESSAGE

As the construction season is winding down and we turn our attention to the winter months and the holidays it seems like a good time to provide an update on what has been accomplished over the last few months and what lies ahead for the new year.

As required by the PADEP and the municipalities MS4 permit, and more specifically the Pollutant Reduction Program (PRP) requirements, the Borough has completed stream improvements to the Glass Run and Streets Run watershed areas. The improvements included the stream in Elm Leaf Park and upper reaches of the Glass Run stream. This project consisted of re-establishing the banks of the streams and to create riparian buffers. Riparian buffers are strips of vegetation (trees, shrubs or grass) planted next to streams or other water bodies to prevent future erosion. The project was originally estimated to cost around \$1.1 million. But with some value engineering by the Borough's Engineering firm, LSSE, the project bid came in at \$524,235.00! Additionally, the Borough was able to secure a \$100,000.00 grant from the State through the Gaming Economic Development and Tourism Fund lowering that overall cost to the Borough.

The Borough's annual Road and Storm Sewer Improvement program is coming to a close. This year the Borough paved approximately 14,000 linear feet or 2.6 miles of roads which cost \$1.2 million. The Borough has over 60 miles of roads so this was only 3% of the total amount of road miles that got resurfaced. The other measures Public Works performs to stretch the life of the roads and keep the costs down is to sealing cracks with a bituminous material each spring on certain roads that are not overly stressed, filling potholes, repairing catch basins and curbs. Additionally, when utilities perform work on their facilities under the roads, they are required to repave those areas in full versus past practices of just paving the small holes they dug or the trenches they cut. This adds to the miles of roads getting resurfaced and less we have to pave.

Lastly, for those who enjoy the Great Allegheny Passage (GAP) trail that runs through the Borough and is sandwiched between the Monongahela River and River Road, you will see a new Riverfront Park that is being upgraded and funded by Friends of the Riverfront. The park has been renamed through a contest that Friends ran and will be called "Eagle's Landing Riverfront Park". The upgrades will include a picnic pavilion, bike repair station and an ADA walkway to a viewing platform near the river edge with interpretive signage. This work will begin and be completed next year. If you have not utilized the trail, it is a gem within the Borough that I highly recommend. You might even pass me on my bike one weekend as I am a frequent user of this excellent amenity that few communities have.

And finally, a reminder that in the winter months you will see our Public Works crews keeping streets clear during weather events. We ask that you keep snow out of the streets from your sidewalks and driveways and keep vehicles parked off of the roadways where possible.

Happy Holidays!

Robert T. Firek, P. E.
Borough Manager

Baldwin Borough

2025 Recycling and Bulk Collection Schedule

■ Recycling Collection
 ■ Bulk Collection
 ■ Leaf Collection Days
 ■ Observed Holidays

January 2025

S	M	T	W	T	F	S
			1	2	3	4
5	6	7	8	9	10	11
12	13	14	15	16	17	18
19	20	21	22	23	24	25
26	27	28	29	30	31	

February 2025

S	M	T	W	T	F	S
						1
2	3	4	5	6	7	8
9	10	11	12	13	14	15
16	17	18	19	20	21	22
23	24	25	26	27	28	

March 2025

S	M	T	W	T	F	S
						1
2	3	4	5	6	7	8
9	10	11	12	13	14	15
16	17	18	19	20	21	22
23	24	25	26	27	28	29
30	31					

April 2025

S	M	T	W	T	F	S
			1	2	3	4
5	6	7	8	9	10	11
12	13	14	15	16	17	18
19	20	21	22	23	24	25
26	27	28	29	30		

May 2025

S	M	T	W	T	F	S
				1	2	3
4	5	6	7	8	9	10
11	12	13	14	15	16	17
18	19	20	21	22	23	24
25	26	27	28	29	30	31

June 2025

S	M	T	W	T	F	S
1	2	3	4	5	6	7
8	9	10	11	12	13	14
15	16	17	18	19	20	21
22	23	24	25	26	27	28
29	30					

July 2025

S	M	T	W	T	F	S
		1	2	3	4	5
6	7	8	9	10	11	12
13	14	15	16	17	18	19
20	21	22	23	24	25	26
27	28	29	30	31		

August 2025

S	M	T	W	T	F	S
					1	2
3	4	5	6	7	8	9
10	11	12	13	14	15	16
17	18	19	20	21	22	23
24	25	26	27	28	29	30
31						

September 2025

S	M	T	W	T	F	S
	1	2	3	4	5	6
7	8	9	10	11	12	13
14	15	16	17	18	19	20
21	22	23	24	25	26	27
28	29	30				

October 2025

S	M	T	W	T	F	S
			1	2	3	4
5	6	7	8	9	10	11
12	13	14	15	16	17	18
19	20	21	22	23	24	25
26	27	28	29	30	31	

November 2025

S	M	T	W	T	F	S
						1
2	3	4	5	6	7	8
9	10	11	12	13	14	15
16	17	18	19	20	21	22
23	24	25	26	27	28	29
30						

December 2025

S	M	T	W	T	F	S
	1	2	3	4	5	6
7	8	9	10	11	12	13
14	15	16	17	18	19	20
21	22	23	24	25	26	27
28	29	30	31			

Observed Holidays

If a holiday falls on a weekday, collections for the rest of the week will be pushed back a day. For example, for a Thursday holiday, service would be on Friday, and Friday service would be Saturday. For holidays on Saturday or Sunday, there are no delays.

New Year's Day: Wednesday January 1, 2025

Memorial Day: Monday May 26, 2025

Independence Day: Friday July 4, 2025

Labor Day: Monday September 1, 2025

Thanksgiving Day: Thursday November 27, 2025

Christmas Day: Thursday December 25, 2025



Do More with My WM

Customers with a My WM account will see their collection day updated in their dashboard the week of the service change.

Don't have an account?

Scan or visit wm.com/mywm to sign up for an account.



LIBRARY PRESENTS TRIVIA NIGHT

Christmas TRIVIA NIGHT!



Friday, December 13th

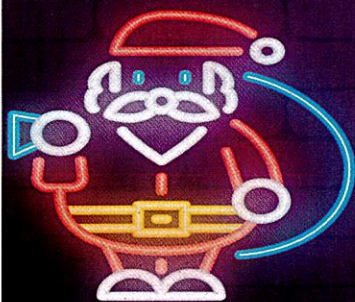
at 6:30 PM

\$10.00 (per person)

21 & Up BYOB

Registration required.

**1 Sign Up
(per registration)**



GINGERBREAD HOUSE

Contest

Get into the holiday spirit with our
Gingerbread House Decorating Contest!
Gather your family/friends get creative and
submit your best decorated gingerbread
house!!!

CONTEST OPENS NOVEMBER 8TH
AND ENTRIES ACCEPTED THROUGH
DECEMBER 8TH

JUDGING WILL TAKE PLACE
DECEMBER 9TH-13TH

WINNER AWARDED DECEMBER 16TH



Email choff@baldwinborough.org

if you would like to be entered into the contest and to get more details

BALDWIN KIWANIS HOLIDAY FESTIVAL

FRIDAY, DECEMBER 13TH

5:00 - 8:00PM

BALDWIN BOROUGH BUILDING
3344 CHURCHVIEW AVENUE

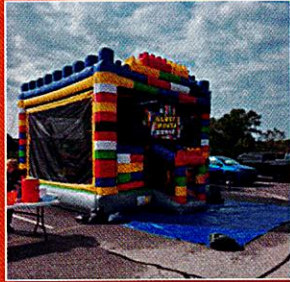
Holiday Carols, Craft Vendors, Kids Craft
Corner, Visits with Santa, Visit the Log Cabin,
Sweets and Hot Chocolate, and Lighting of the
Borough's Christmas Tree

In the spirit of giving, please bring non-
perishable food items or a monetary donation
for the local food pantry. For full details, visit:

www.baldwinpakiwanis.org



TRUNK OR TREAT!



Baldwin Borough's First Trunk-or-Treat Event was a big success! Thank you to all of our community partners and residents who decorated their trunks and handed out candy. It was a fun day for all!



MEN WEAR PINK

The Baldwin Borough Police Department has partnered with the American Cancer Society for its Men Wear Pink Campaign. In 2023, around 290,560 individuals were diagnosed with breast cancer, highlighting the urgent need for awareness and support. Men Wear Pink ambassadors nationwide are stepping up to raise funds and advocate for an end to breast cancer for everyone.

Throughout October, Breast Cancer Awareness Month, the Baldwin Borough Police Department launched its campaign, inviting all Borough employees to contribute a minimum donation of \$50 toward a fundraising goal of \$2,500. Employees who donated received a pink bracelet and t-shirt to wear on Fridays throughout the month. The community was also encouraged to participate and make donations to support this important cause. We are proud to say that our fundraising goal was met and the campaign raised \$2,501.77!



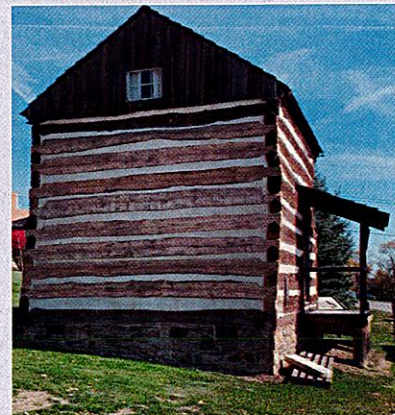
HISTORIC LOG CABIN

If you've visited the Municipal Building recently, you may have noticed the historic log house currently undergoing restoration. Donated to the Historical Society in 2003, the cabin was discovered on a property along Willett Road. It dates back to 1830 and is believed to have originally belonged to the Willett family. The Historical Society enhances the cabin's authenticity by decorating it with period-appropriate items.

The logs of the cabin have required restoration work. West Side logs were replaced along with new chinking, while the front and back chinking was also replaced. Additionally, the chimney needs repairs, which are planned for the spring.

Interestingly, the contractor has suggested that the logs may be older than previously thought, possibly dating back to the late 1700s. The University of Pittsburgh is interested in conducting a dendrochronology study on the logs, which involves analyzing the tree rings to establish a more accurate date.

The historic log house is open to the public and is located at 3344 Churchview Avenue, next to the Municipal Building.



WINTER WEATHER OPERATIONS AND TIPS FOR RESIDENTS

The Baldwin Borough Public Works Department has the responsibility of clearing municipal streets of snow and ice from winter storms. Our goal is to provide residents with the highest possible level of service, and to promote a safe environment for vehicular traffic. We take this responsibility very seriously, and strive to continuously improve our operations.

At the beginning of a snow event, be assured that Borough crews are out, but all roads cannot be treated at once. The Borough prioritizes roadways during snow events, with heavily trafficked or arterial roadways being our highest priorities, followed by school bus routes. Neighborhood roadways and cul-de-sac streets are important to our operations; however, when winter conditions are extreme these roadways may not be treated right away.

During snowfalls when plows are used (generally when accumulation reaches 2 inches or more). Remember that snow plows cannot pick up and carry snow, so snow is placed where our operators believe it will create the least number of problems for motorists. In order to assist the Borough Public Works Department during snow events, we would like to remind you of the following:

- Remove your vehicles from the street. Vehicles parked in the street create a hazard for snow plow operators and do not allow roadways to be completely cleared.

- Residents are reminded not to shovel or plow snow from your driveway or walkway into the street. This may cause additional danger and hazards to both pedestrians and motorists, especially after Borough crews have cleared the area. This action is prohibited under Borough Ordinance No. 904, which may result in a fine

- Maintain and repair mailbox posts. Mailboxes should not extend past the face of the curb and should be constructed of sturdy lumber.

- Property owners and businesses are reminded that snow and ice must be removed from the sidewalk along your property within 24 hours of the beginning of a snowfall.

- If you elect to contact the Borough during a snow event to request service or to report a problem, please make every attempt to keep messages simple and direct. Be sure to state the nature of the problem, the location and a return telephone number.

BULK ITEM COLLECTION occurs during the first FULL week of each month. The first FULL week encompasses all five weekdays (Monday through Friday). During this time, residents can place up to two large items, such as furniture or appliances, curbside for collection. It's important to note that bags of trash or boxes are not considered bulk items and will not be collected. To ensure a smooth collection process, please keep at least 3 ft. of distance between the cart and the item you are setting out.

Bulk items are not always collected by the garbage truck. On some routes, a separate truck will collect bulk items. Please do not call in a missed bulk pick up until the day after your trash collection to allow time for collection.

See the Solid Waste & Recycling section on the Borough's website: www.baldwinborough.org for more details.

Upcoming WM Holidays:

November 28, 2024 (Trash will be delayed one day for pick ups on November 28th and 29th)

December 25, 2024 (Trash will be delayed one day for pick ups on December 25th, 26th, and 27th)

WINTER MS4 TIPS

MAINTAIN

Winterize vehicles to prevent leaks. Wash cars at a commercial carwash, where soapy water does not enter the storm sewer system.

USE LESS

A little salt goes a long way! Apply sparingly and remove slush once the snow melts to prevent refreezing. Salt in our stormwater system can be harmful to aquatic life.

STORE SAFELY

Practice good housekeeping by storing salt and other de-icers under a roof or other cover to minimize polluted runoff.



Baldwin Borough Plastic Film Recycling

In collaboration with the Whitehall Community Lions Club

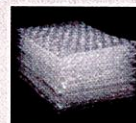
What can be Recycled?



Grocery Bags



Bread Bags



Bubble Wrap



Cereal Bags



Dry Cleaning Bags



Ice Bags



Newspaper Bags



Plastic Wrap



Produce Bags

And More!

Why Recycle?

By participating in the Baldwin Borough Plastic Film Recycling Program, you are not only helping the planet, but your community as well. Plastic film is thin, clear, or opaque plastic that is often used in food storage or packaging. Recycling your plastic film through this community program is a great way to give back to the community.

For every 1,000 pounds of plastic film recycled, a bench is earned for the community. In order to be recycled, all plastic must be clean, dry, and free of food residue.



How to Recycle

Please drop off any plastic film you may have in the community collection bin. The bin is conveniently located at the front of the Baldwin Borough Administration Building Entrance at 3344 Churchview Ave.

Have Any Questions?

Contact Brendan Harris or Mary Ann Belles

bpharris308@gmail.com

lionmaryannb14b@gmail.com